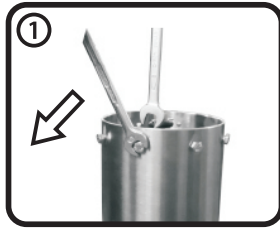
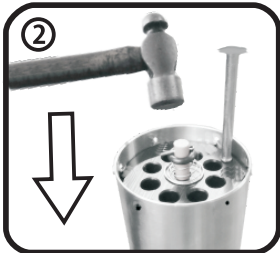


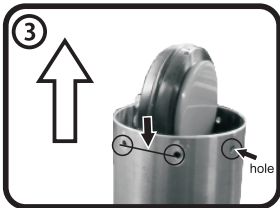
HOW TO STRIP THE JOOSTE CYLINDER



Remove nuts & bolts



Tap on side of footvalve to twist it in a vertical position.

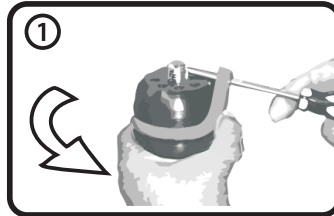


Remove footvalve vertically between holes to prevent damaging the O-ring.

HOW TO REPLACE PISTON RINGS

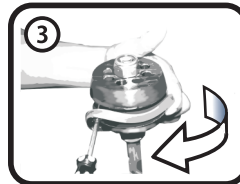
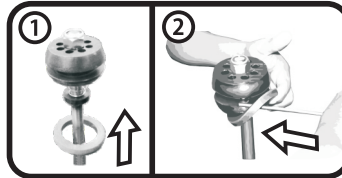
**Secure cylinder rod in a vice.*

Illustration as for AS cylinder/RDS has two rings



To remove the ring slip a screwdriver in below the ring and stretch it off on the solid side of the piston

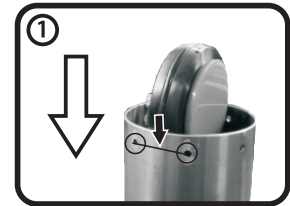
REPLACING NEW RINGS



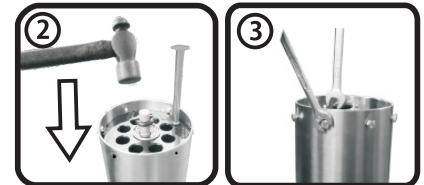
Secure a portion of the ring in the groove of the piston and slip the rest over with a screwdriver.

HOW TO REASSEMBLE THE CYLINDER

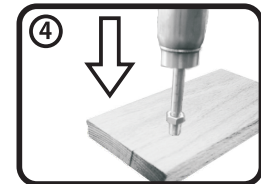
Replace piston in cylinder and test for a smooth operation.



Place footvalve vertically between the holes to prevent damaging the O-ring.



Tap on the side of footvalve to 'twist' it in a horizontal position (spring side out).
Replace bolts and nuts.



Tap rod on wooden block to secure footvalve against nuts & bolts.